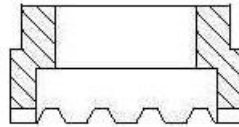
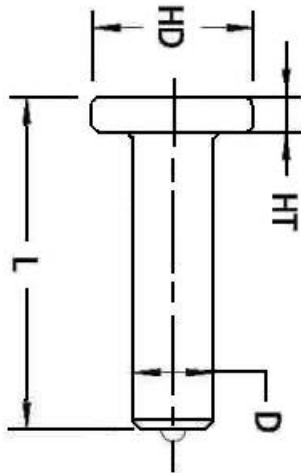


STUD WELDING PRODUCTS, INC.



Headed Shear Connector Stud

Size: 3/4 x 7-3/16



(Ferrule)

Headed Anchor Studs are used in all types of concrete connections. They can be welded to a flat surface, or to the inside or outside of an angle.

Ferrules: All orders for studs include required ferrules

Length: Length is before weld. Stud diameters (D) 1/2" and below will be approximately 1/8" shorter after stud welding. 5/8"-7/8" will be approximately 3/16" shorter after stud welding. 1" will be approximately 1/4" shorter after stud welding.

Made to order lengths are available upon request

Mechanical Property Requirements		
	Type A	Type B
Tensile Strength	61,000 psi min	65,000 psi min
Yield Strength	49,000 psi min	51,000 psi min
Elongation (% in 2")	17% min	20% min
Elongation(% in 5x dia)	14% min	15% min
Reduction of Area	50% min	50% min
Type A Studs are general purpose studs Type B Studs are headed, bent, or of other configuration that are used as essential component in composite beam design.		

Stud Specification	
Material	Low Carbon Steel (1010-1020) ASTM A29 ASTM A108
Stud Diameter (D)	3/4"
Stud Standard Length (L)	7-3/16
Stud Head Diameter (HD)	1-1/4
Stud Head Thickness (HT)	3/8
Stud Part #	HSC 34 7316
Ferrule Part #	FER12-F

Check us out on the internet www.studweldprod.com or email info@studweldprod.com

Downey, CA
 9459 Washburn Rd.
 Downey, CA 90242
 Phone- 800.252.1919
 Fax- 562.862.3022

Hayward, CA
 2391 American Ave.
 Hayward, CA 94545
 Phone- 510.782.7883
 Fax- 510.782.7918

Renton, WA
 927 Thomas Ave. SW
 Renton, WA 98057
 Phone- 425.656.9787
 Fax- 425.656.9786

Phoenix, AZ
 3535 East Wier Ave., Ste. #4
 Phoenix, AZ 85040
 Phone- 602.305.9350
 Fax- 602.305.4890