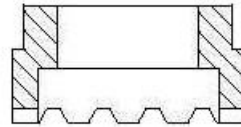
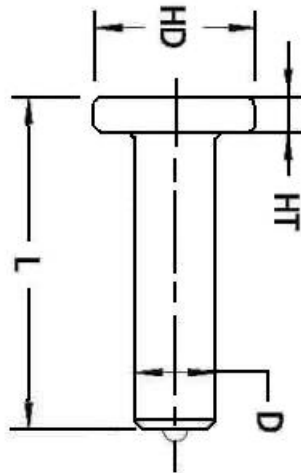


STUD WELDING PRODUCTS, INC.



Headed Concrete Anchor Stud

Size: 5/8 x 2-11/16



(Ferrule)

Headed Anchor Studs are used in all types of concrete connections. They can be welded to a flat surface, or to the inside or outside of an angle.

Ferrules: All orders for studs include required ferrules

Length: Length is before weld. Stud diameters (D) 1/2" and below will be approximately 1/8" shorter after stud welding. 5/8"-7/8" will be approximately 3/16" shorter after stud welding. 1" will be approximately 1/4" shorter after stud welding.

Made to order lengths are available upon request

| Mechanical Property Requirements | | |
|---|----------------|----------------|
| | Type A | Type B |
| Tensile Strength | 61,000 psi min | 65,000 psi min |
| Yield Strength | 49,000 psi min | 51,000 psi min |
| Elongation (% in 2") | 17% min | 20% min |
| Elongation(% in 5x dia) | 14% min | 15% min |
| Reduction of Area | 50% min | 50% min |
| Type A Studs are general purpose studs Type B Studs are headed, bent, or of other configuration that are used as essential component in composite beam design. | | |

| Stud Specification | |
|---------------------------------|---|
| Material | Low Carbon Steel (1010-1020) ASTM A29 ASTM A108 |
| Stud Diameter (D) | 5/8" |
| Stud Standard Length (L) | 2-11/16 |
| Stud Head Diameter (HD) | 1.25 |
| Stud Head Thickness (HT) | .312 |
| Stud Part # | HCA 58 21116 |
| Ferrule Part # | FER10-F |

Check us out on the internet www.studweldprod.com or email info@studweldprod.com

Downey, CA
9459 Washburn Rd.
Downey, CA 90242
Phone- 800.252.1919
Fax- 562.862.3022

Hayward, CA
2391 American Ave.
Hayward, CA 94545
Phone- 510.782.7883
Fax- 510.782.7918

Renton, WA
927 Thomas Ave. SW
Renton, WA 98057
Phone- 425.656.9787
Fax- 425.656.9786

Phoenix, AZ
3535 East Wier Ave., Ste. #4
Phoenix, AZ 85040
Phone- 602.305.9350
Fax- 602.305.4890