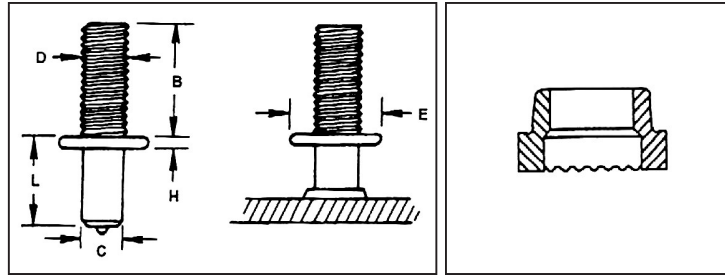


# CS COLLAR STUDS



D	B	SWP Part#	L. Min.	C	E	H	Ferrule Part Number
1/4-20	5/8	CK 215 38 58	3/8	215	1/2	3/32	FER04 C
5/16-18	5/8	CK 275 38 58	3/8	275	5/8	3/32	FER05 C
3/8-16	5/8	CK 330 38 58	3/8	330	5/8	3/32	FER06 C
1/2-13	3/4	CK 448 12 34	1/2	448	3/4	3/32	FER08 C

\*Also available in metric. Other sizes available. See ferrule spec sheet for ferrule specs.

HOW TO ORDER	
Specify diameter, thread size before weld (BW) length, type of material.	
<b>EXAMPLE</b>	
CK .330 x 4 1/8 w/ 3/8-16 x 5/8	
When ordering Stainless Steel, SS will be added to the part number.	
Diameters 9/16" and below will be 1/8" shorter AFTER weld	
Diameters " 5/8 - 7/8" will be 3/16" shorter AFTER weld	
Diameters 1- 1 1/4" will be 1/4" shorter AFTER weld	

**Collar Studs** are used to provide a spacer between the parent metal and the part secured on threaded extension.

**Material:** Low carbon steel, ASTM A 108 1010-1020. Stainless steel 18-8, 302, 304 and 316.

Low Carbon Mechanical Property Requirements		Stainless Steel
Tensile Strength	61,000 psi min.	Material: Stainless Steel AISI grade - 302/304/316. Other grades available upon request.
Yield Strength	49,000 psi min.	
Elongation (% in 2 in.)	17% min.	Mechanical Properties: Values for various grades available upon request.
Elongation (% in 5x dia.)	14% min.	
Reduction of Area	50% min.	

**STUD WELDING PRODUCTS, INC.**

Los Angeles • San Francisco • Seattle • Phoenix

Toll Free: 800.252.1919 • www.studweldprod.com