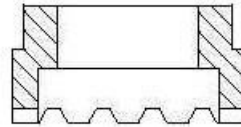
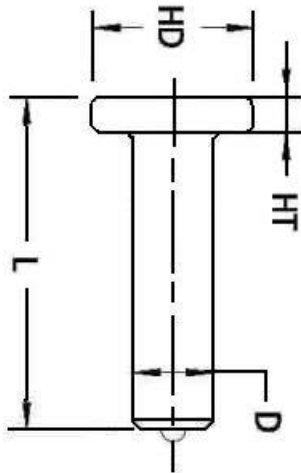


# STUD WELDING PRODUCTS, INC.



## Headed Concrete Anchor Stud

Size: 5/8 x 6-3/16



(Ferrule)

Headed Anchor Studs are used in all types of concrete connections. They can be welded to a flat surface, or to the inside or outside of an angle.

Ferrules: All orders for studs include required ferrules

Length: Length is before weld. Stud diameters (D) 1/2" and below will be approximately 1/8" shorter after stud welding. 5/8"-7/8" will be approximately 3/16" shorter after stud welding. 1" will be approximately 1/4" shorter after stud welding.

*Made to order lengths are available upon request*

Mechanical Property Requirements		
	Type A	Type B
<b>Tensile Strength</b>	61,000 psi min	65,000 psi min
<b>Yield Strength</b>	49,000 psi min	51,000 psi min
<b>Elongation (% in 2")</b>	17% min	20% min
<b>Elongation(% in 5x dia)</b>	14% min	15% min
<b>Reduction of Area</b>	50% min	50% min
<b>Type A Studs are general purpose studs</b> <b>Type B Studs are headed, bent, or of other configuration that are used as essential component in composite beam design.</b>		

Stud Specification	
<b>Material</b>	Low Carbon Steel (1010-1020) ASTM A29 ASTM A108
<b>Stud Diameter (D)</b>	5/8"
<b>Stud Standard Length (L)</b>	6-3/16
<b>Stud Head Diameter (HD)</b>	1.25
<b>Stud Head Thickness (HT)</b>	.312
<b>Stud Part #</b>	HCA 58 6316
<b>Ferrule Part #</b>	FER10-F

Check us out on the internet [www.studweldprod.com](http://www.studweldprod.com) or email [info@studweldprod.com](mailto:info@studweldprod.com)

**Downey, CA**  
9459 Washburn Rd.  
Downey, CA 90242  
Phone- 800.252.1919  
Fax- 562.862.3022

**Hayward, CA**  
2391 American Ave.  
Hayward, CA 94545  
Phone- 510.782.7883  
Fax- 510.782.7918

**Renton, WA**  
927 Thomas Ave. SW  
Renton, WA 98057  
Phone- 425.656.9787  
Fax- 425.656.9786

**Phoenix, AZ**  
3535 East Wier Ave., Ste. #4  
Phoenix, AZ 85040  
Phone- 602.305.9350  
Fax- 602.305.4890