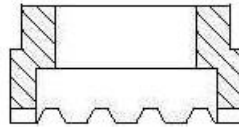
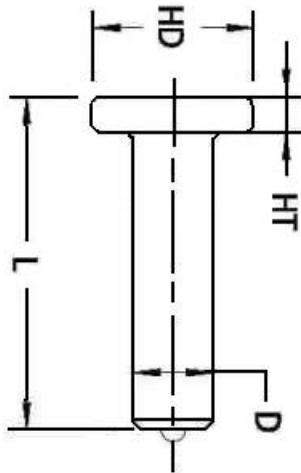


# STUD WELDING PRODUCTS, INC.



## Headed Concrete Anchor Stud

Size: 3/8 x 5-1/8



(Ferrule)

Headed Anchor Studs are used in all types of concrete connections. They can be welded to a flat surface, or to the inside or outside of an angle.

Ferrules: All orders for studs include required ferrules

Length: Length is before weld. Stud diameters (D) 1/2" and below will be approximately 1/8" shorter after stud welding. 5/8"-7/8" will be approximately 3/16" shorter after stud welding. 1" will be approximately 1/4" shorter after stud welding.

*Made to order lengths are available upon request*

| Mechanical Property Requirements  |                |                |
|---|----------------|----------------|
|   | Type A         | Type B         |
| <b>Tensile Strength</b>   | 61,000 psi min | 65,000 psi min |
| <b>Yield Strength</b>   | 49,000 psi min | 51,000 psi min |
| <b>Elongation (% in 2")</b>   | 17% min        | 20% min        |
| <b>Elongation(% in 5x dia)</b>  | 14% min        | 15% min        |
| <b>Reduction of Area</b>  | 50% min        | 50% min        |
| <b>Type A Studs are general purpose studs</b><br><b>Type B Studs are headed, bent, or of other configuration that are used as essential component in composite beam design.</b> |                |                |

| Stud Specification              |   |
|---------------------------------|---|
| <b>Material</b>                 | Low Carbon Steel<br>(1010-1020) ASTM A29<br>ASTM A108 |
| <b>Stud Diameter (D)</b>        | 3/8"  |
| <b>Stud Standard Length (L)</b> | 5-1/8   |
| <b>Stud Head Diameter (HD)</b>  | .75   |
| <b>Stud Head Thickness (HT)</b> | .281  |
| <b>Stud Part #</b>              | HCA 38 518  |
| <b>Ferrule Part #</b>           | FER06-F   |

Check us out on the internet [www.studweldprod.com](http://www.studweldprod.com) or email [info@studweldprod.com](mailto:info@studweldprod.com)

**Downey, CA**  
 9459 Washburn Rd.  
 Downey, CA 90242  
 Phone- 800.252.1919  
 Fax- 562.862.3022

**Hayward, CA**  
 2391 American Ave.  
 Hayward, CA 94545  
 Phone- 510.782.7883  
 Fax- 510.782.7918

**Renton, WA**  
 927 Thomas Ave. SW  
 Renton, WA 98057  
 Phone- 425.656.9787  
 Fax- 425.656.9786

**Phoenix, AZ**  
 3535 East Wier Ave., Ste. #4  
 Phoenix, AZ 85040  
 Phone- 602.305.9350  
 Fax- 602.305.4890