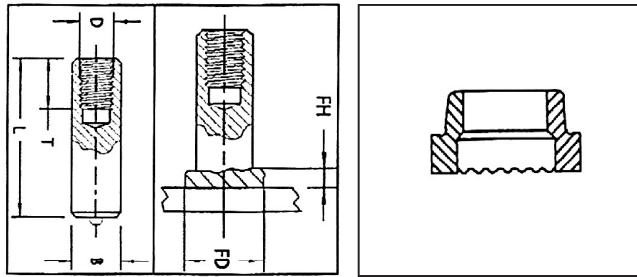


# TP INTERNALLY TAPPED STUD FULL WELD BASE



<b>B</b> Stud Diameter	<b>L</b> Length (BW)	<b>D</b> Tap Diameter	<b>T</b> Tap Depth	<b>SWP Part#</b>	<b>Ferrule Part Number</b>
1/4	5/8	#8 32	1/4	call	FER04-FHD
5/16	5/8	#10 24	5/16	call	FER05-FHD
3/8	13/16	1/4 20	3/8	call	FER06-FHD
7/16	1	5/16 18	1/2	call	FER07-FHD
1/2	1-1/8	3/8 16	9/16	call	FER08-FHD
5/8	1-3/16	7/16 14	5/8	call	FER10-FHD
3/4	1-7/16	1/2 13	3/4	call	FER12-FHD
7/8	1-5/8	5/8 11	15/16	call	FER14-FHD
1	2-1/4	3/4 10	1-1/8	call	FER16-FHD

\*Also available in metric. See ferrule spec sheet for ferrule specs.

<b>HOW TO ORDER</b>
Specify base diameter, finished length before weld (BW) length, tap size, tap depth and type of material.
<b>EXAMPLE</b>
5/8 x 1-1/4" (BW) Tapped Stud (TS) with a 3/8-16 x 7/16 tap, mild steel
When ordering Stainless Steel, SS will be added to the part number.
Diameters 9/16" and below will be 1/8" shorter AFTER weld
Diameters " 5/8 - 7/8" will be 3/16" shorter AFTER weld
Diameters 1 - 1 1/4" will be 1/4" shorter AFTER weld

**Tapped Studs** are used in all types of applications. They can be welded to a flat surface, or to the inside or outside of an angle.

**Length:** Length is listed before weld. Studs Welding Products TP Studs can be made in any length above the standard minimum. Tru-Deck applications burn off 3/8".

**Material:** Low carbon steel, ASTM A29, 1010 1020. TP studs are also available in weldable stainless steel.

<b>Low Carbon Mechanical Property Requirements</b>		<b>Stainless Steel</b>
Tensile Strength	61,000 psi min.	Material: Stainless Steel AISI grade - 302/304/316. Other grades available upon request.
Yield Strength	49,000 psi min.	
Elongation (% in 2 in.)	17% min.	
Elongation (% in 5x dia.)	14% min.	Mechanical Properties: Values for various grades available upon request.
Reduction of Area	50% min.	

**STUD WELDING PRODUCTS, INC.**

Los Angeles • San Francisco • Seattle • Phoenix

Toll Free: 800.252.1919 • www.studweldprod.com